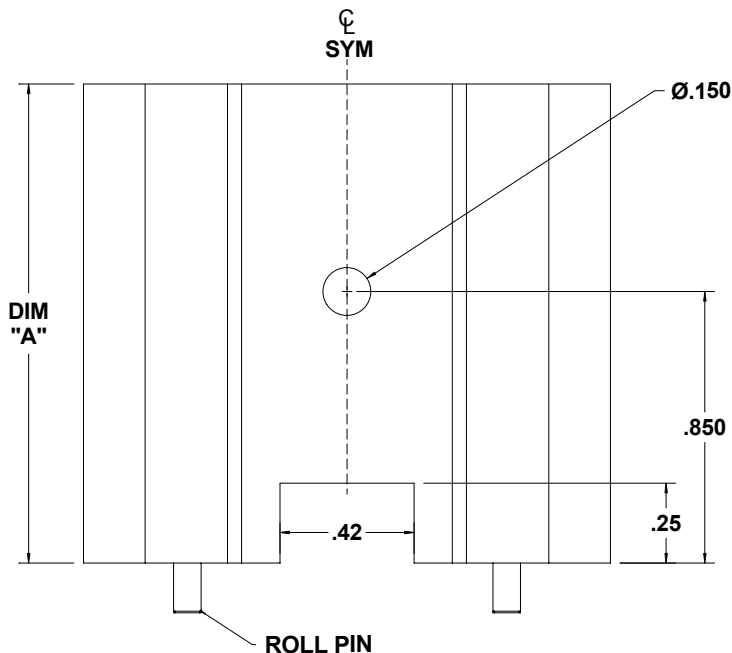
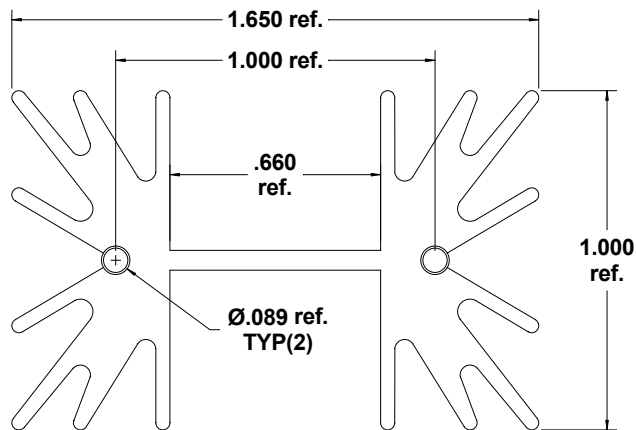


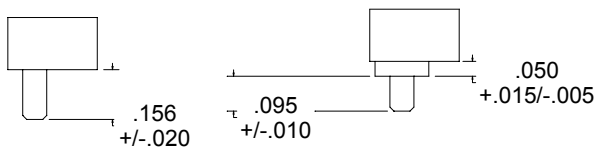
REV.	DATE	DESCRIPTION	ECN#	BY
A	5/15/01	ADDED NOTE 1 AND REF. ON EXTRUSION DIM.	---	B.H.
B	8/23/01	CHANGED 1.062 TO 1.00 PER EXTRUSION DRAWING.	---	B.H.
C	2/25/02	UPDATED DRAWING BORDER--ADDED FINISH TABLE, PART NUMBER TABLE AND DELETED NOTE 1	0207	B.H.

FINISH TABLE	
SUFFIX (*)	FINISH
U	NO FINISH
B	BLACK ANODIZE

PART NUMBER	DIM. "A"	ROLL PIN
MM5008*-1	1.00	N/A
MM5008*-1.5	1.50	N/A
MM5008*-2	2.00	N/A
MM5008*-2.5	2.50	N/A
MM5008*-1-RP	1.00	RP
MM5008*-1.5-RP	1.50	RP
MM5008*-2-RP	2.00	RP
MM5008*-2.5-RP	2.50	RP
MM5008*-1-RP2	1.00	RP2
MM5008*-1.5-RP2	1.50	RP2
MM5008*-2-RP2	2.00	RP2
MM5008*-2.5-RP2	2.50	RP2

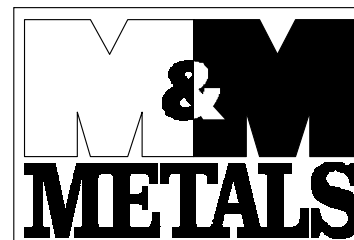


AVAILABLE ROLL PINS



RP

RP2



908 E. PIONEER DR.  
 IRVING, TX 75061  
 PHONE: 972-721-7174  
 FAX: 972-438-1247  
 e-mail: heatsink@mmmetals.com  
 www.mmmetals.com

4	NOTES (UNLESS OTHERWISE SPECIFIED)
3	
2	
1	

**NOTICE OF PROPRIETARY INFORMATION**

THIS DOCUMENT IS THE PROPERTY OF M&M METALS AND SHALL NOT BE REPRODUCED OR COPIED, IN WHOLE OR IN PART, WITHOUT THE WRITTEN PERMISSION OF M&M METALS.

TOLERANCE (UNLESS OTHERWISE SPECIFIED)	DWG. BY: B.H.	DATE: 8/18/00
<b>DIMENSIONS IN INCHES</b>	CHECKED BY:	DATE:
XX ± .010	APPROVED BY:	DATE:
XXX ± .005	ORIGINAL ECN#:	DATE:
± 1/2° ON ANGLES	MATERIAL: MM13130	
FINISH: UNFINISHED OR BLACK ANODIZE		

TITLE BLOCK	
<i>DO NOT SCALE DRAWING</i>	
MM5008 SERIES	
SIZE: A	DRAWING NUMBER: MM5008
REV: C	SHEET 1 OF 1