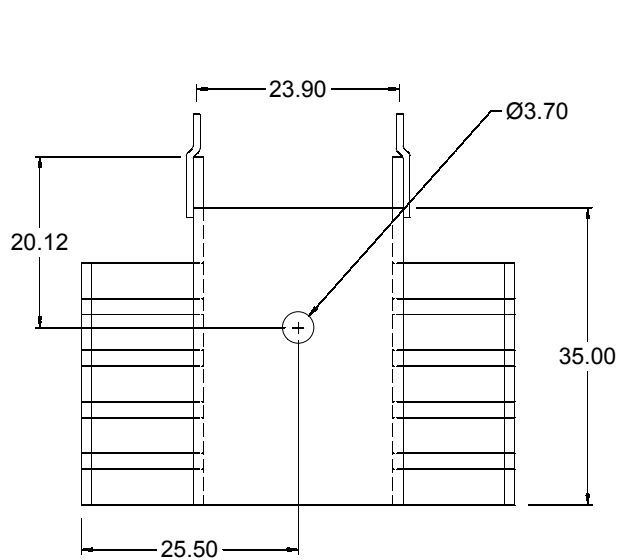
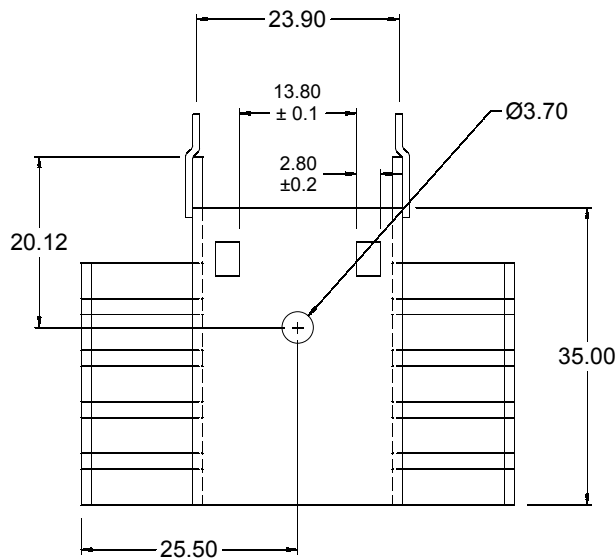


REV.	DATE	DESCRIPTION	ECN#	BY

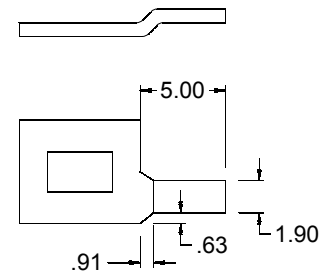


**"A"**

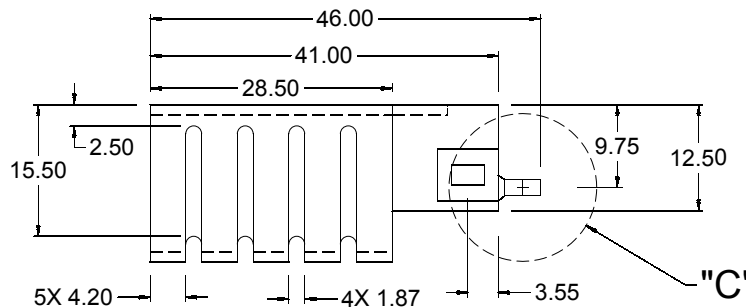
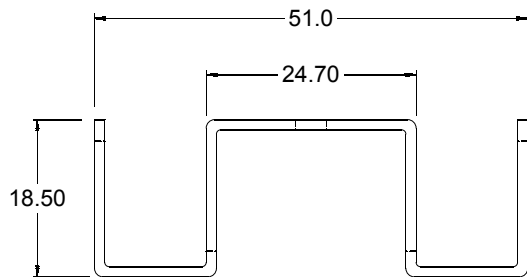


**"B"**

SLOTS TAKE MM5102 CLIP

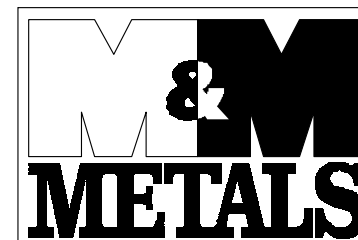


**DETAIL "C"**  
2:1 SCALE



**"C"**

CODE	PART NUMBER
"A"	MM5083B-1
"B"	MM5083B-2



908 E. PIONEER DR.  
IRVING, TX 75061  
PHONE: 972-721-7174  
FAX: 972-438-1247  
e-mail: heatsink@mmmetals.com  
www.mmmetals.com

4	<b>NOTES (UNLESS OTHERWISE SPECIFIED)</b>
3	
2	
1	

**NOTICE OF PROPRIETARY INFORMATION**

THIS DOCUMENT IS THE PROPERTY OF M&M METALS AND SHALL NOT BE REPRODUCED OR COPIED, IN WHOLE OR IN PART, WITHOUT THE WRITTEN PERMISSION OF M&M METALS.

TOLERANCE (UNLESS OTHERWISE SPECIFIED)	DWG. BY: B.H.	DATE: 4/10/02
DIMENSIONS ARE METRIC <b>X ± 0.5</b> <b>XX ± 0.3</b>	CHECKED BY:	DATE:
	APPROVED BY:	DATE:
	ECN#: 0221	DATE:
FINISH: PIN: TIN PLATED BODY: BLACK ANODIZE	MATERIAL: AL 1100 T=1.2	REV.:

TITLE BLOCK	DO NOT SCALE DRAWING
MM5083 SERIES	MM5083
SIZE: A	DRAWING NUMBER: MM5083
SHEET 1 OF 1	