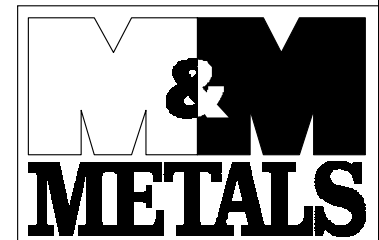
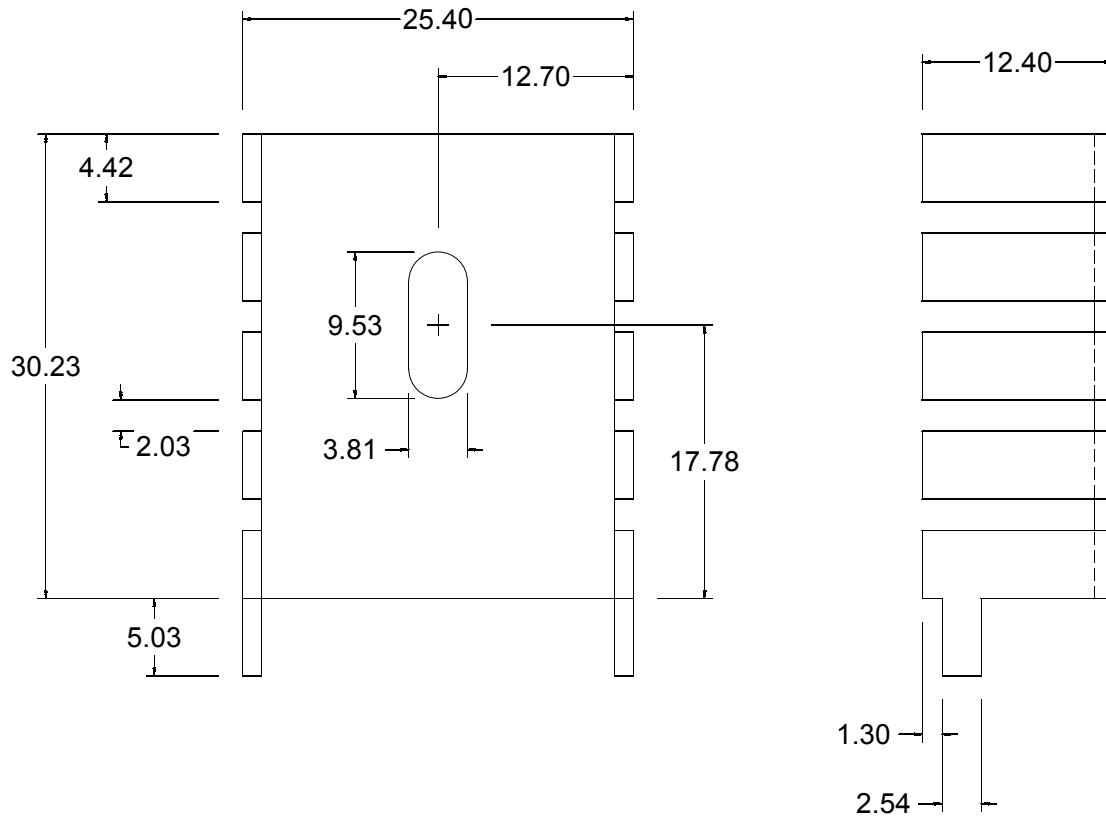


REV.	DATE	DESCRIPTION	ECN#	BY
A	8/30/02	ADDED -TT TO PART NUMBER BECAUSE OF COPPER, TIN PLATED PAINTED BLACK SPEC.	0303	B.H.



908 E. PIONEER DR.
 IRVING, TX 75061
 PHONE: 972-721-7174
 FAX: 972-438-1247
 e-mail: heatsink@mmmetals.com
 www.mmmetals.com

3		NOTICE OF PROPRIETARY INFORMATION	TOLERANCE (UNLESS OTHERWISE SPECIFIED)	DWG. BY: B.H.	DATE: 4/10/02	TITLE BLOCK	<i>DO NOT SCALE DRAWING</i>
			DIMENSIONS ARE METRIC	CHECKED BY:	DATE:	MM5087B-TT	
1	TIN PLATE THEN BLACK ELECTRONIC COATING EXCEPT ON THE TABS	THIS DOCUMENT IS THE PROPERTY OF M&M METALS AND SHALL NOT BE REPRODUCED OR COPIED, IN WHOLE OR IN PART, WITHOUT THE WRITTEN PERMISSION OF M&M METALS.	UNIT +/- 0.20	APPROVED BY:	DATE:		SIZE: A
			FINISH: SEE NOTE 1	ECN#: 0221	DATE: 3/28/02	REV: A	SHEET 1 OF 1

NOTES (UNLESS OTHERWISE SPECIFIED)