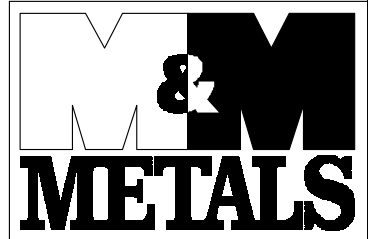
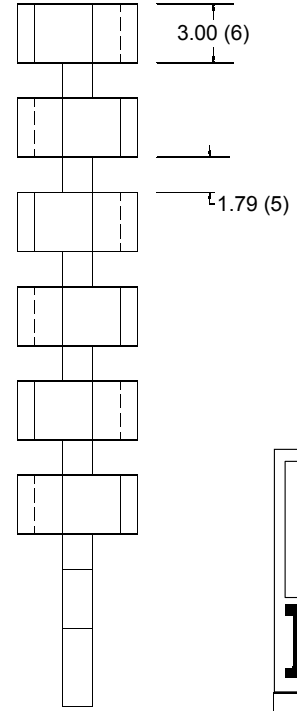
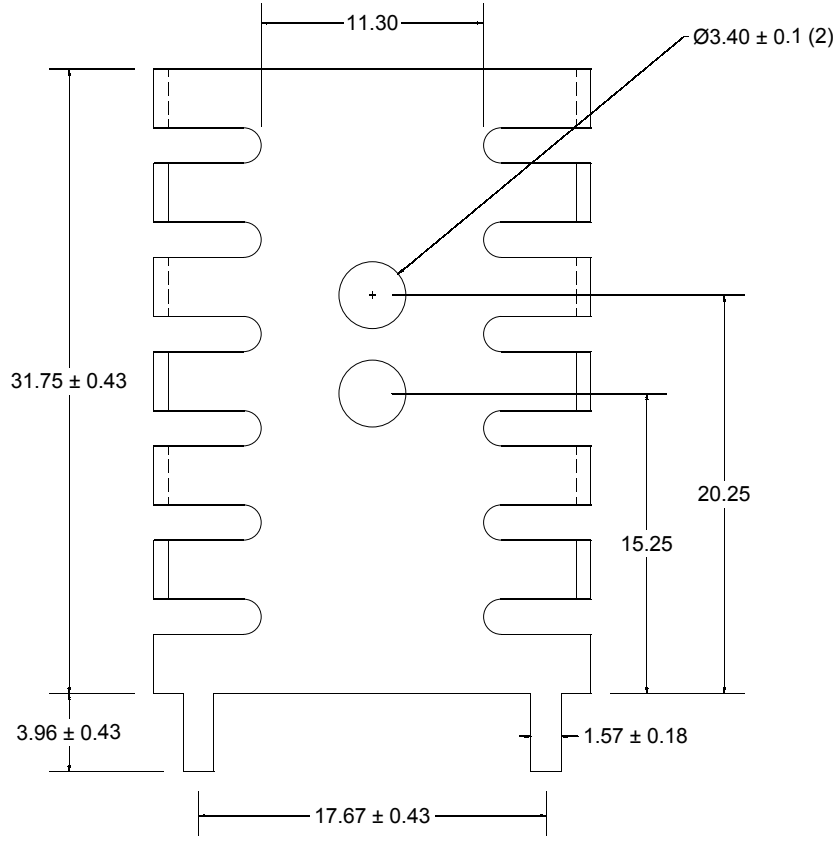
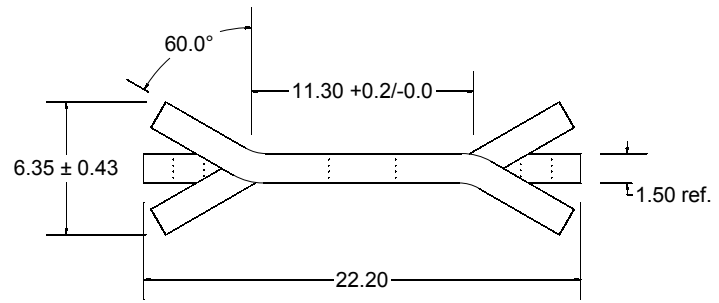


REV.	DATE	DESCRIPTION	ECN#	BY



908 E. PIONEER DR.
 IRVING, TX 75061
 PHONE: 972-721-7174
 FAX: 972-438-1247
 e-mail: heatsink@mmmetals.com
 www.mmmetals.com

4	
3	
2	
1	
NOTES (UNLESS OTHERWISE SPECIFIED)	

NOTICE OF PROPRIETARY INFORMATION

THIS DOCUMENT IS THE PROPERTY OF M&M METALS AND SHALL NOT BE REPRODUCED OR COPIED, IN WHOLE OR IN PART, WITHOUT THE WRITTEN PERMISSION OF M&M METALS.

TOLERANCE (UNLESS OTHERWISE SPECIFIED)	DWG. BY: B.H.	DATE: 6/4/02
DIMENSIONS ARE METRIC	CHECKED BY:	DATE:
	APPROVED BY:	DATE:
UNIT ± 0.25 DEGREE ± 2°	ECN#: 0221	DATE: 3/28/02
FINISH: TIN PLATED	MATERIAL: 1/2 HARD BRASS T=1.50mm	REV.:

TITLE BLOCK	<i>DO NOT SCALE DRAWING</i>
MM5094T	
SIZE: A	DRAWING NUMBER: MM5094
SHEET 1 OF 1	