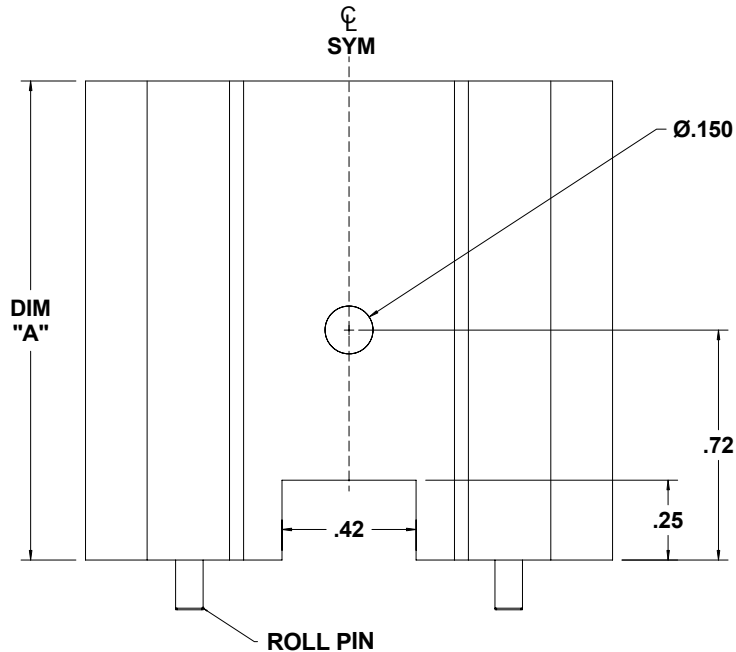
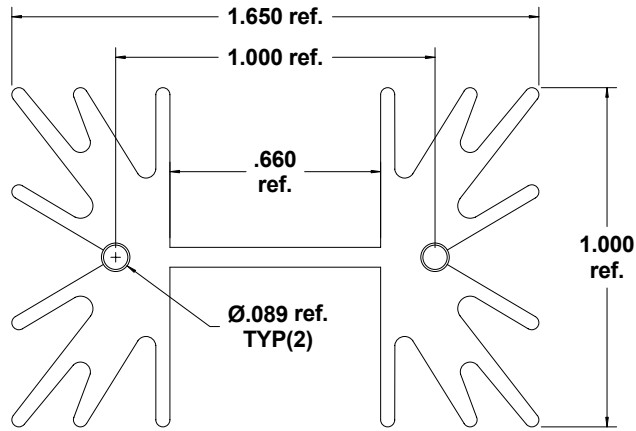


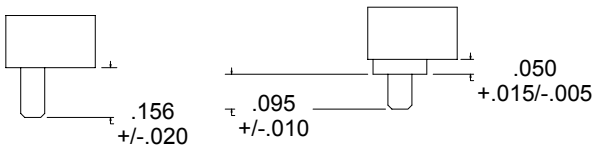
REV.	DATE	DESCRIPTION	ECN#	BY

FINISH TABLE	
SUFFIX (*)	FINISH
U	NO FINISH
B	BLACK ANODIZE

PART NUMBER	DIM. "A"	ROLL PIN
MM5104*-1	1.00	N/A
MM5104*-1.5	1.50	N/A
MM5104*-2	2.00	N/A
MM5104*-2.5	2.50	N/A
MM5104*-1-RP	1.00	RP
MM5104*-1.5-RP	1.50	RP
MM5104*-2-RP	2.00	RP
MM5104*-2.5-RP	2.50	RP
MM5104*-1-RP2	1.00	RP2
MM5104*-1.5-RP2	1.50	RP2
MM5104*-2-RP2	2.00	RP2
MM5104*-2.5-RP2	2.50	RP2

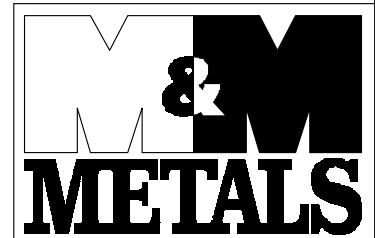


**AVAILABLE ROLL PINS**



RP

RP2



908 E. PIONEER DR.  
 IRVING, TX 75061  
 PHONE: 972-721-7174  
 FAX: 972-438-1247  
 e-mail: heatsink@mmmetals.com  
 www.mmmetals.com

4	<b>NOTES (UNLESS OTHERWISE SPECIFIED)</b>
3	
2	
1	

**NOTICE OF PROPRIETARY INFORMATION**

THIS DOCUMENT IS THE PROPERTY OF M&M METALS AND SHALL NOT BE REPRODUCED OR COPIED, IN WHOLE OR IN PART, WITHOUT THE WRITTEN PERMISSION OF M&M METALS.

TOLERANCE (UNLESS OTHERWISE SPECIFIED)	DWG. BY: B.H.	DATE: 5/1/02
DIMENSIONS IN INCHES	CHECKED BY:	DATE:
XX ± .010 XXX ± .005 ± 1/2° ON ANGLES	APPROVED BY:	DATE:
FINISH: UNFINISHED OR BLACK ANODIZE	ECN#: 0239	DATE: 4/29/02
	MATERIAL: MM13130	

TITLE BLOCK	<b>DO NOT SCALE DRAWING</b>
<b>MM5104 SERIES</b>	
SIZE: A	DRAWING NUMBER: MM5104
REV.:	SHEET 1 OF 1