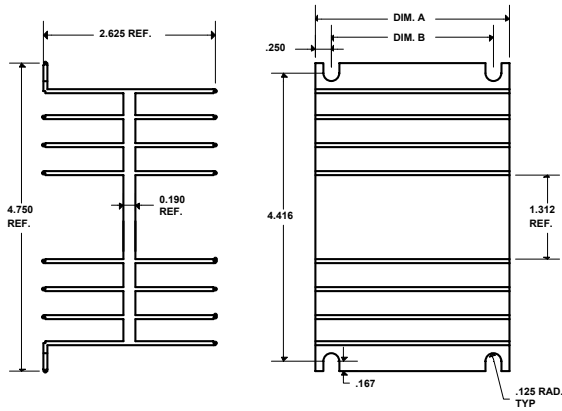




# M&M Metals

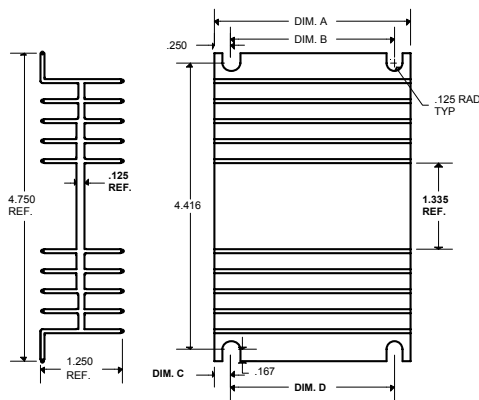
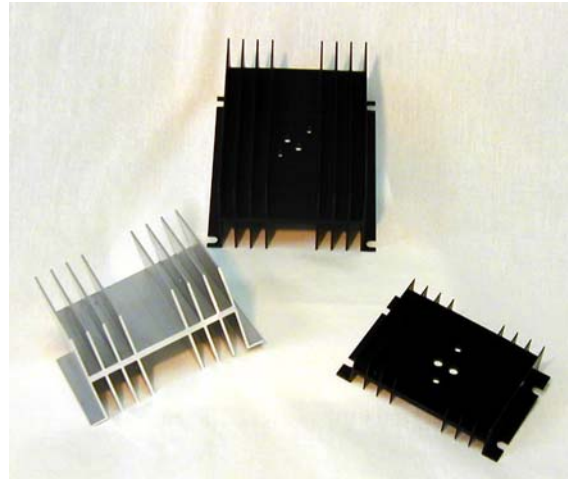
## EXTRUDED MEDIUM POWER HEATSINKS

- Extruded aluminum fin heat sinks for forced or natural convection applications
- Standard mounting hole pattern



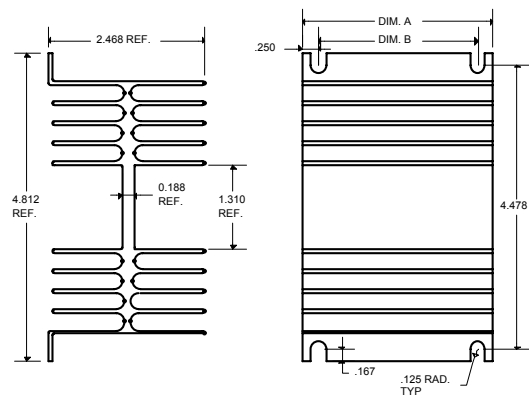
MAT'L MM11881

PART NUMBER	DIM. A	DIM. B
MM5028B	5.500	5.000
MM5033B	3.000	2.500



MAT'L MM13184

PART NUMBER	DIM. A	DIM. B	DIM. C	DIM. D
MM5062B	1.500	1.000	0.750	PART HAS ONLY 1 SLOT
MM5063B	3.000	2.500	0.250	1.000



MAT'L MM12131

PART NUMBER	DIM. A	DIM. B
MM5064B	5.500	5.000
MM5065B	3.000	2.500

Contact M&M Metals for:

- available finishes
- standard hole patterns
- standard hole pattern layouts

908 E. Pioneer Drive  
 Irving, TX 75061  
 Phone: 972-721-7174  
 Fax: 972-438-1247  
 E-mail: heatsink@mmmetals.com